
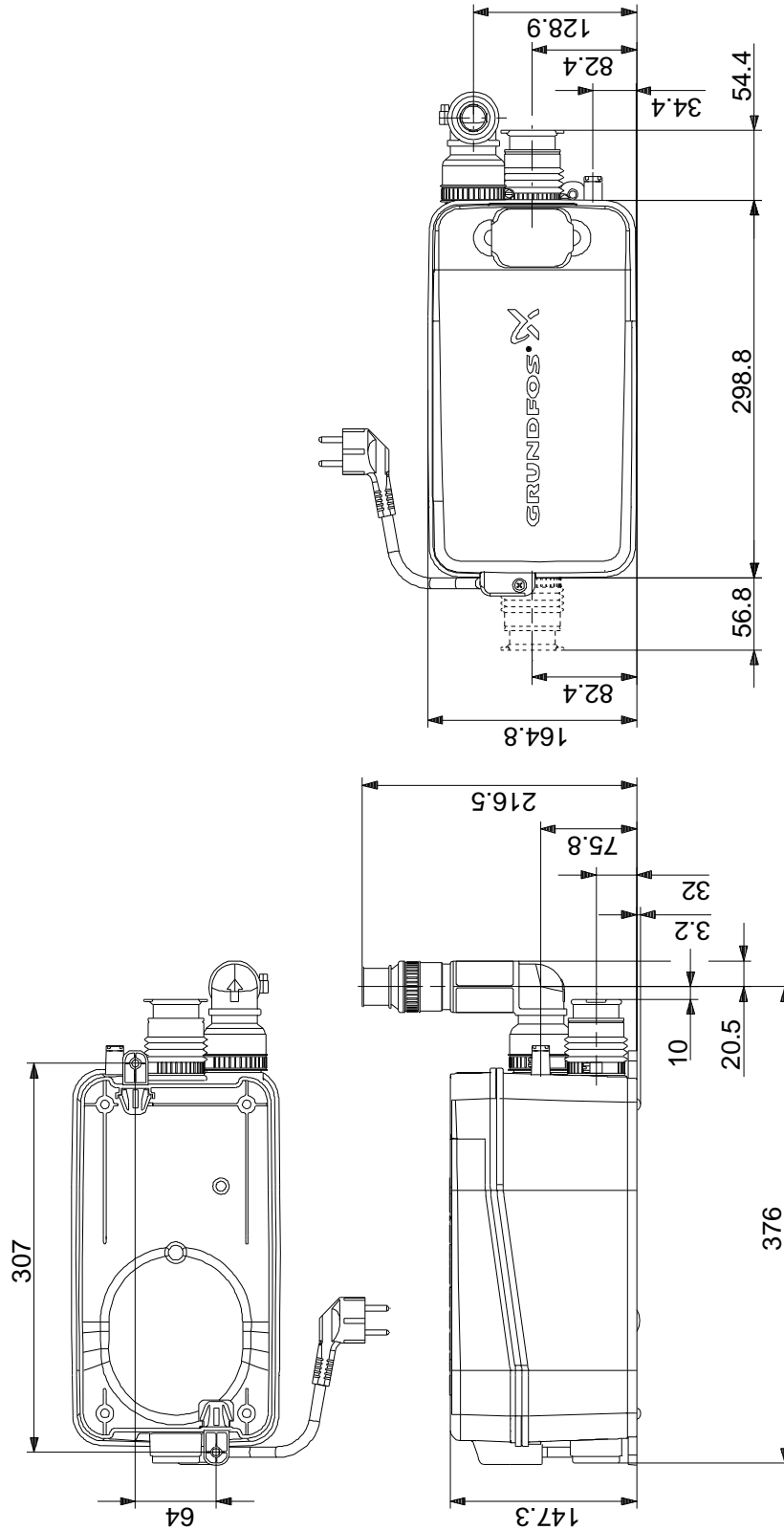


Pozicija	Kol.	Opis
	1	<p>SOLOLIFT2 D-2</p>  <p>Opozorilo! Slika proizvoda je simboli na</p> <p>Št. proizvoda: 97775318</p> <p>Sololift2 D-2 is a small, compact automatic lifting station suitable for pumping of wastewater off places in private dwellings where greywater (w/o faeces) cannot be led directly to the sewer by means of a natural downward slope.</p> <p>Sololift2 D-2 is typically used for:</p> <ul style="list-style-type: none">• cabinet showers, washbasins or bidets in basements below sewer level, in connection with the renovation or modernisation of existing buildings, where the location may be remote from the main soil pipe so that a natural slope cannot be established. <p>Extremely low switching levels for lowest construction heights, advantageously in case of connection of a shower receptor.</p> <p>Sololift2 D-2 is suitable for confined space conditions in built-in cabinets or also below shower receptors or pedestals.</p> <p>The pumping of liquids containing other material may cause faults and limit the scope of our guarantee.</p> <p>The compact lifting station is equipped with</p> <ul style="list-style-type: none">- Cable with or without plug (see technical data)- Discharge hose connector with several adaptors for pipes with Ø22-36mm <p>-Integrated non return valve</p> <ul style="list-style-type: none">- Dry and high performance motor unit incl. thermal protection, pressure switch and controller- Flexible connectors for inlet (adjustable in height) of pipes Ø36 or 40- Manual anti clogging function and separate drain connection for service- Venting valve with overflow protection- Uplift fixation clips <p>Design according to EN12050-2 and production inspection by external institute with unique features focused on quick installation, long lasting operation and easy clean service.</p> <p>Teko ina: rpana teko ina: Vse Newtonovske teko ine Maks. temp. medija: 50 °C Specifi na teža: 998.2 kg/m3</p> <p>Tehni ni podatki: Odobritve na napisni tablici: CE,TR,LGA,VDEEMV,VDE Toleranca krivulje: ISO9906:2012 3B</p> <p>Materiali: Posoda: PLASTIC</p>

Pozicija	Kol.	Opis
		Montaža: Sesalni priključek rpalke: 36/40/50 Tla ni priključek rpalke: 22/32 Št. vodnikov: 3X0,75MM2 Električni podatki: Vhodna moč - P1: 280 W Omrežna frekvenca: 50 Hz Nominalna napetost: 1 x 220-240 V Nominalni tok: 1.3 A Cos phi - faktor moči: 0,95 Nominalna hitrost: 2800 rpm Razred zaščite (IEC 34-5): IP44 Izolacijski razred (IEC 85): F Dolžina kabla: 1.2 m Tip kabla: H05VV-F Tip kablskega priključka: SCHUKO Drugo: Neto teža: 4.53 kg Bruto teža: 5.53 kg

97775318 SOLOLIFT2 D-2 50 Hz



Opozorilo! Vse enote so v [mm], razen če je navedeno.
To poenostavljeno dimenzioniranje ne kaže vseh detajlov.